

Accessories for Electric Drives

PC LW 6K 12

Propeller coupling for NOVA 15 LW BLDC motor

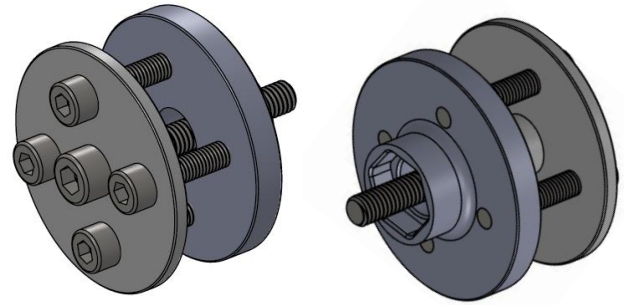
Part-Number: 06-044.000.12-000-296

Overview

The "PC LW 6K 12" is a propeller coupling which is designed for use with the Plettenberg NOVA 15 Light-Weight ("LW") series in UAV applications. It is directly mounted on the motor shaft and has a special hexagon shaped locking system, which protects the coupling from slipping and/or loosening during operation.

Features

- Anti-rotation due to hexagon shaped locking system.
- Outer screws M5 with property class 8.8.
- Center screw M6 with property class 12.9.



Delivery Scope

1. Flange with hexagon locking
2. Adapter disk with centering pin
3. Mounting screws in different lengths

Specification

Parameter	Value
Weight	Approx. 47 g (without screws)
Outer diameter	Ø48 mm
Centering pin	Ø12 mm
Bolt circle	Ø29 mm, 4x90° M5
Material	Aerospace grade aluminum

Installation Guide

- Fasten flange and adapter disk to propeller before mounting on motor.
- Finally, slide propeller with propeller coupling onto shaft and tighten with enclosed high-strength screw.
- Observe tightening torques.

Tightening torques

M6 screw	10 Nm
M5 screw	6 Nm

Safety instructions

- Use only the enclosed screws intended for this purpose.
- Make sure that the propeller rests flat on the coupling.
- The propeller coupling must be pushed onto the hexagon locking system, as otherwise no save power transmission can be guaranteed.
- Ensure that the screws do not extend more than 7 mm from the backside of the flange when assembled to prevent collision with the motor housing.
- Mount all screws with medium strength thread locker.

