

## Accessories for Electric Drives

# PC LW 6K 10

Propeller coupling for NOVA 4 and NOVA 15 LW BLDC motor

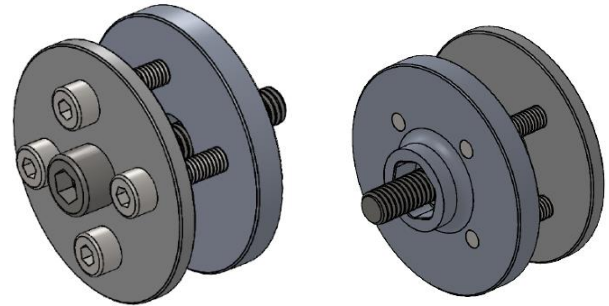
Part-Number: 06-000.000.12-000-018

### Overview

The "PC LW 6K 10mm" is a propeller coupling which is designed for use with the Plettenberg NOVA 4 and NOVA 15 light-weight ("LW") series. It is directly mounted on the motor shaft and has a special hexagon shaped locking system, which protects the coupling from slipping and/or loosening during operation.

### Features

- Anti-rotation due to hexagon shaped locking system.
- Outer screws M4 with property class 8.8.
- Center screw M6 with property class 12.9.



### Delivery Scope

1. Flange with hexagon locking
2. Adapter disk with extension
3. Mounting screws in different lengths

### Specification

Parameter	Value
Weight	Approx. 31 g (without screws)
Outer diameter	Ø42 mm
Centering pin	Ø10 mm
Bolt circle	Ø24 mm, 4x90° M4
Material	Aerospace grade aluminum

### Installation Guide

- Fasten flange and adapter disk to propeller before mounting on motor.
- Finally, slide propeller with propeller coupling onto shaft and tighten with enclosed high-strength screw.
- Observe tightening torques.

### Tightening torques

M6 (12.9)	10 Nm
M4 (8.8)	3 Nm

### Safety instructions

- Use only the enclosed screws intended for this purpose.
- Make sure that the propeller rests flat on the coupling.
- The propeller coupling must be pushed onto the hexagon locking system, as otherwise no save power transmission can be guaranteed.
- Ensure that the screws do not extend more than 5 mm from the flange when assembled to prevent collision with the housing.
- Secure all screws with medium strength thread locker.

