

## Accessories for Electric Drives

# GC6-00 / GC6-90

6 mm Gold Connector for Electric Motors and Electronic Speed Controllers

### Overview

The Gold Connector series is a gold-plated aluminum plug and socket system for connecting electric motor and electronic speed controller cables.

### Features

- Gold plated for corrosion protection and optimized conductivity
- Weight optimized design
- Special design for shock and vibration in harsh environments
- Straight or rectangular cable option
- Socket with internal lamellas



### Delivery Scope

1. Plug (male)
2. Socket (female)

### Specification

Parameter	Value
Weight	0.87 g (Plug) 1.29 g (Socket)
Voltage	400 V <sup>1</sup>
Continuous Current	350 A <sup>2</sup>
Peak Current	600 A <sup>3</sup>
Recommended Cable Size	4 - 16 mm <sup>2</sup>

#### Notes

<sup>1</sup> glued heat shrink tube across both connectors is recommended

<sup>2</sup> with suitable cable and sufficient cooling

<sup>3</sup> only for 5 s with 5 min delay

### Installation Guide

The cable must be placed in the recess and soldered with a 80+ W soldering iron. Heat shrink tube (9 mm 3:1) must be used to isolate the connectors against short circuits.

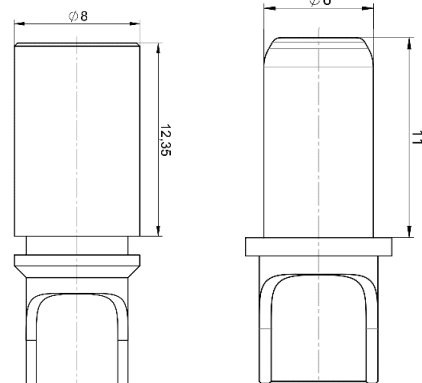
### Part-Number

**GC6-00:** Plug: 07-021-001, Socket: 07-021-002

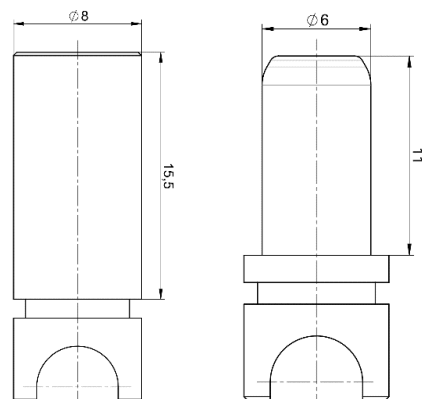
**GC6-90:** Plug: 07-021-008, Socket: 07-021-009

#### GC6-00

(in mm)



#### GC6-90



Plettenberg Elektromotoren GmbH & Co. KG  
Rostocker Straße 30  
34225 Baunatal, Germany  
T: +49 (0) 56 01 97 96-0  
www.plettenbergmotors.com  
sales@plettenbergmotors.com



EU Directives  
EMC Directive 2014/30/EU Appendix IV  
Low Voltage Directive 2014/35/EU Appendix IV  
RoHS Directive 2011/65/EU Appendix I



© 2023 Plettenberg Elektromotoren GmbH & Co. KG.  
All rights reserved.

Short Manual GC6-00 / GC6-90 | Version 1.2 | 13.03.2024 | Technical changes reserved.