

Accessories for Electric Drives

PC LW 6K 10mm

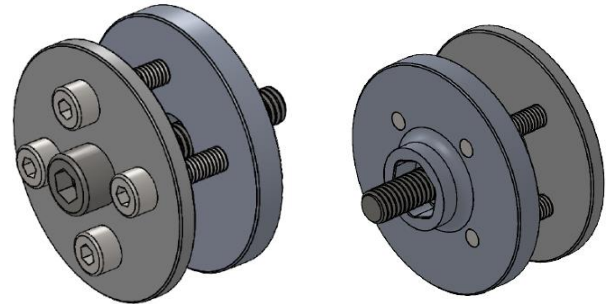
Propeller coupling for NOVA 4 and NOVA 15 LW BLDC motor

Overview

The "PC LW 6K 10mm" is a propeller coupling which is designed for use with the Plettenberg NOVA 4 and NOVA 15 light-weight ("LW") series. It is directly mounted on the motor shaft and has a special hexagon shaped locking system, which protects the coupling from slipping and/or loosening during operation.

Features

- Anti-rotation due to hexagon shaped locking system.
- Middle screw M6 with property class 12.9.
- Outer screws M4 with property class 8.8.



Delivery Scope

1. Flange
2. Adapter disk with extension
3. Screws in custom lengths (depending on propeller)

Specification

Parameter	Value
Weight	Approx. 31 g (without screws)
Diameter	Ø42 mm
Shoulder bolt	Ø10 mm
Shoulder bolt length	5 mm
Bolt circle	Ø24 mm
Quantity	4x90°
Thread size	M4

Installation Guide

- Fasten flange and washer with attachment to propeller before mounting on motor.
- Use only the screws intended for this purpose.
- Observe tightening torques.
- Finally, slide propeller with propeller coupling onto shaft and tighten with screw.

Tightening torques

M6 (12.9)	10 Nm
M4 (8.8)	3 Nm

Safety instructions

- Make sure that the propeller rests flat on the coupling.
- The propeller coupling must be pushed onto the hexagon locking system, as otherwise no power transmission can be guaranteed.
- Ensure that the screws do not extend more than 5 mm from the flange when assembled to prevent collision with the housing.
- Secure all screws with medium strength thread locker.

