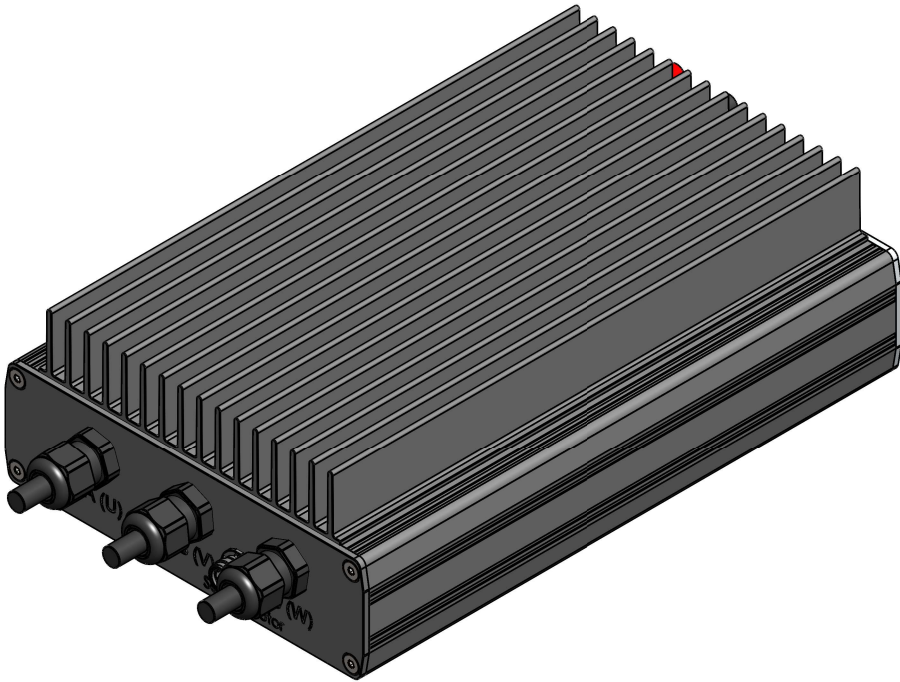


Electronic Speed Controller for BLDC Motor	
Continuous power max.	30 kW
Electric RPM limit	240,000 1/min
Voltage range	30 - 140 V
Current max.	280 A (max 2 sec.)
Current cont.	220 A (at 25°C ambient temperature)
Interfaces	RS232 plus either CAN bus 2.0 or PWM or analog
Cooling	Air cooled
Protection class	IP53 (higher class possible)



all dimensions are in mm

Weight (ex. cable) approx: 1300 g



MST 140-200 K

Summary Datasheet