

Accessories for Electric Drives

GC6-00 / GC6-90

6 mm Gold Connector for Electric Motors and Electronic Speed Controllers

Overview

The Gold Connector series is a gold-plated aluminum plug and socket system for connecting electric motor and electronic speed controller cables.

Features

- Gold plated for optimal conductivity
- Weight optimizes design
- Special design for shock and vibration in harsh environments
- Straight or rectangular cable option

Delivery Scope

1. Plug
2. Socket



Specification

| Parameter | Value |
|------------------------|----------------------------------|
| Weight | 0.87 g (Plug) 1.29 g (Socket) |
| Voltage | 400 V ¹ |
| Continuous Current | 350 A ² |
| Peak Current | 600 A ³ |
| Recommended Cable Size | 4 - 16 mm ² |

Notes

¹ only with glued heat shrink tube across both connectors

² with suitable cable and sufficient cooling

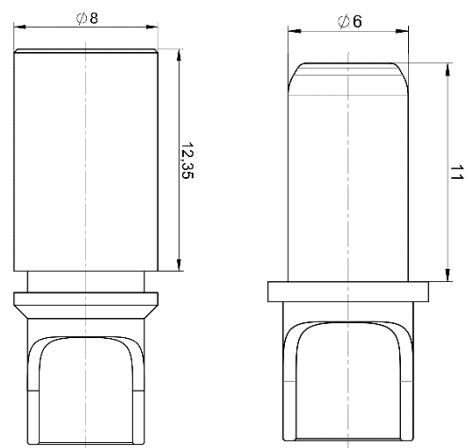
³ only for 5 s with 5 min delay

Installation Guide

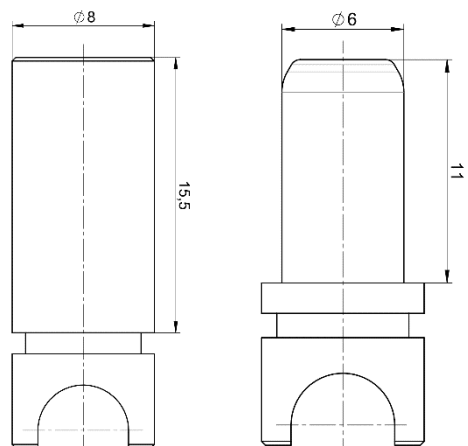
The cable must be placed in the recess and soldered with a 100 W soldering iron. Heat shrink tube (9 mm 3:1) must be used to isolate the connectors against short circuits.

GC6-00

(in mm)



GC6-90



Plettenberg Elektromotoren GmbH & Co. KG
 Rostocker Straße 30
 34225 Baunatal, Germany
 T: +49 (0) 56 01 97 96-0
 www.plettenbergmotors.com
 sales@plettenbergmotors.com



EU Directives
 EMC Directive 2014/30/EU Appendix IV
 Low Voltage Directive 2014/35/EU Appendix IV
 RoHS Directive 2011/65/EU Appendix I



© 2023 Plettenberg Elektromotoren GmbH & Co. KG.
 All rights reserved.

Short Manual GC6-00 / GC6-90 | Version 1.1 | 06.01.2023 | Technical changes reserved.